

CAL MAXVU Datasheet

Temperature and Process Controller



Overview

MAXVU has been designed to offer essential temperature control in a device that's easy to install, fast to program, with improved display visibility.

MAXVU provides an affordable solution for applications where primary temperature control functions such as heat only or heat/cool are needed. It offers a universal input and up to 3 outputs with a choice of either relay or SSR Drive.

Specification

Input

Thermocouple	• J, K, C, R, S, T, B, L, N.
RTD	• 3 Wire PT100
DC Linear	• 0 to 20mA, 4 to 20mA, 0 to 50mV, 10 to 50mV, 0 to 5V, 1 to 5V, 0 to 10V, 2 to 10V. • Scalable -1999 to 9999, with adjustable decimal point
Accuracy	• Thermocouple $\pm 0.25\%$ of full range ± 1 LSD ($\pm 1^\circ\text{C}$ for thermocouple CJC). • PT100 $\pm 0.25\%$ of full range, ± 1 LSD, DC Linear $\pm 0.2\%$ of full range, ± 1 LSD.
Sampling	• 4 per second
Impedance	• $>10\text{M}\Omega$ resistive, except DC mA (5Ω) and V ($47\text{K}\Omega$)
Sensor Break Detection	• <2 seconds (except zero based DC ranges), high alarms activate for T/C, RTD and mV ranges, low alarms activate for mA or V ranges

Outputs & Options

Relay	• SPST Form A relay; current capacity 2A at 250VA. • $>150,000$ operations at rated voltage/current, resistive load
SSR	• Drive capability $>10\text{V DC @ } 20\text{mA}$
Serial Communications	• 2 Wire RS485, 1,200 to 38,400 bps, Modbus RTU

Operating and Environmental

Temperature & RH	• 0 to 55°C (-20 to 80°C storage), 20% to 95% RH non-condensing
Power Supply	• 100 to 240V 50/60Hz (mains powered version) • 24V DC/AC $+10\%/-15\%$, AC 50/60Hz (low voltage version)
Front Panel Protection	• IP65 (Behind panel IP20)

WEST
Control Solutions

At a Glance

- 1/8 DIN (96 x 48mm) and 1/16 DIN (48 x 48mm)
- Universal input
- Up to 3 outputs
- RS485 communications option
- Fast configuration
- Large clear display
- Depth 67mm

Key Features

- High visibility 18mm display digits (10.2mm lower display 1/16 DIN)
- Quick setup menu with top 10 configuration parameters
- Thermocouple, PT100 or linear DC sensor input
- Up to 3 outputs, relay or SSR
- 2 process alarms, high/low, deviation or band.
- 3 button operation
- 2 x 4 digit display and 3 output status LEDs
- Front panel configuration or via PC configuration software
- RS485 Modbus RTU communications

Specification

Standards	• CE
EMI	• Complies with EN61326 (Susceptibility & Emissions)
Safety Considerations	• Complies with EN61010-1 & UL61010-1 • Pollution Degree 2, Installation Category II
Dimensions (Front Fascia)	• 1/16 DIN = 48 x 48mm • 1/8 DIN = 96 x 48mm
Weight	• 1/8 DIN, 0.12kg excluding packaging • 1/16 DIN x 0.08kg excluding packaging
Communications	• RS485 Modbus RTU communication option

Ordering Code and MAXVU Configuration Software

Supply Voltage
M 110 to 240V AC
L 24V AC / DC

Communications
0 Not Fitted
C RS485 Communications

Format
16 1/16 DIN, 48 x 48mm
08 1/8 DIN, 96 x 48mm

Output

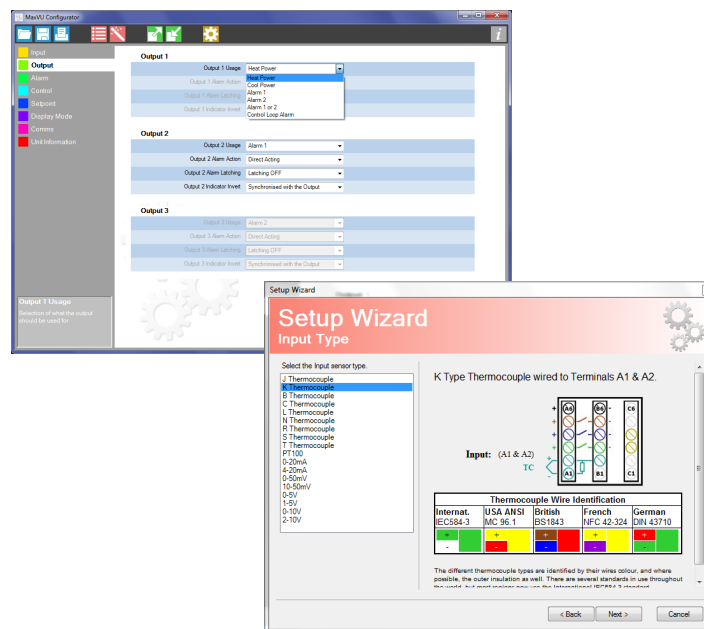
	Out 1	Out 2	Out 3
AA0	SSR	SSR	None
AR0	SSR	Relay	None
RR0	Relay	Relay	None
ARR	SSR	SSR	Relay
RRR	Relay	Relay	Relay

Ordering Code Example: MV160MAA0021U0

MAXVU Configuration software

Controllers can be programmed quickly using the dedicated PC configuration tool via MAXVU's integral configuration port.

- Logical menu driven interface
- Tables with dropdown menus
- Graphical setup wizard with informative help panel
- Save configuration files
- Print report of controller settings



Contact



Email: Inquiries@West-CS.com
Website: www.West-CS.com



Telephone: +1 800 866 6659
Fax: +1 847 782 5223



Address: 1675 Delany Road
 Gurnee, IL 60031 USA

